



# Copperton



## Community Risk Assessment

### Copperton

UFA has one station within Copperton covering a total of 4.63 square miles with a population of 791 as of 2024 and responded to 163 calls for service from 2022-2024.

Municipality	Population	Population Percentage of UFA	Square Miles	Population Density per Sq Mile	Classification	Value of Structures Protected
Copperton	791	0.16%	0.31	2,668	Rural	\$99M

Copperton has decreased its population from 829 in 2020 to 791 in 2024, showing a decrease of 4.58% over a four-year timeframe.

### Copperton Station Information

Station 115	
Owner	UFSA
Opened	1983
Address	8495 West State Highway
Staffing and Apparatus	<ul style="list-style-type: none"> <li>3 Person - Medic Engine 115 (Type 1)</li> <li>Cross-Staffed - Engine 6115 (Type 6)</li> <li>Cross-Staffed - Rehab 115</li> </ul>

### Surrounding UFA and Automatic/Mutual Aid Response Stations

Surrounding fire stations and fire departments that are within an eight-minute response to Copperton are:

Station 54	West Jordan	<ul style="list-style-type: none"> <li>3 Person - Engine 54 (Type 1)</li> <li>2 Person - Medic Ambulance 54</li> <li>Cross-Staffed - Heavy Rescue 54</li> </ul>
Station 55	West Jordan	<ul style="list-style-type: none"> <li>3 Person - Engine 55 (Type 1)</li> <li>2 Person - Medic Ambulance 55</li> <li>Cross-Staffed - Engine 655 (Type 6)</li> </ul>

### Copperton – Incidents by Dispatch Type

	CY 2022	CY 2023	CY 2024
<b>Fire Suppression</b>	3   5%	0   0%	3   5.7%
<b>EMS</b>	40   66.7%	35   70%	45   84.9%
<b>HazMat</b>	3   5%	3   6%	1   1.9%
<b>Service Call</b>	6   10%	1   2%	2   3.8%
<b>Good Intent</b>	5   8.3%	7   14%	1   1.9%
<b>False Call</b>	1   1.7%	4   8%	1   1.9%
<b>Natural Condition</b>	2   3.3%	0   0%	0   0%
<b>Other Situation</b>	0   0%	0   0%	0   0%
<b>Unknown</b>	0   0%	0   0%	0   0%
<b>Total</b>	60   100%	50   100%	53   100%

Table 1 - Incidents by Dispatch Types

### Copperton – 2022-2024 Dispatch and Response Times – Emergent First Due

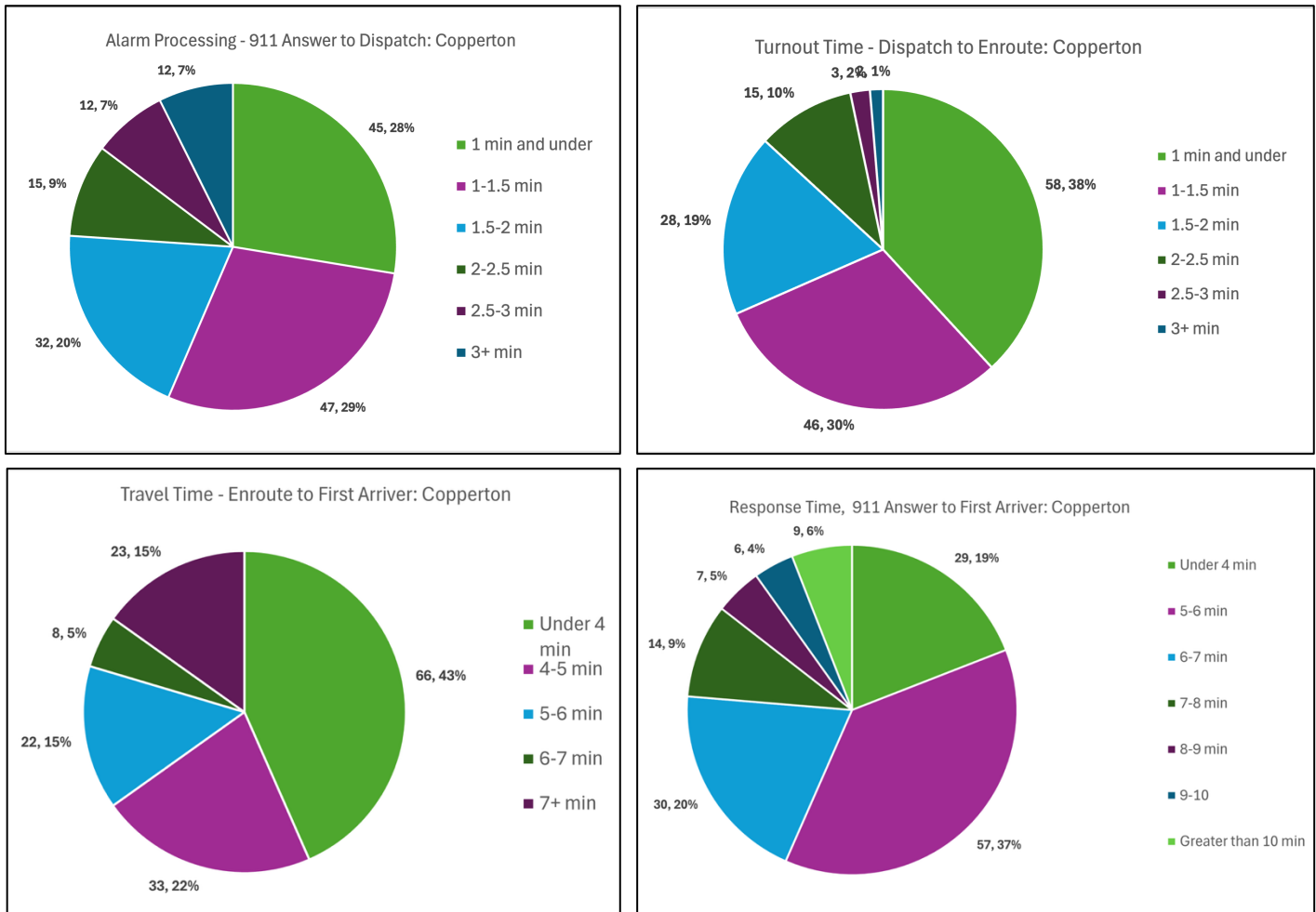


Chart 1 - Dispatch and Response Times

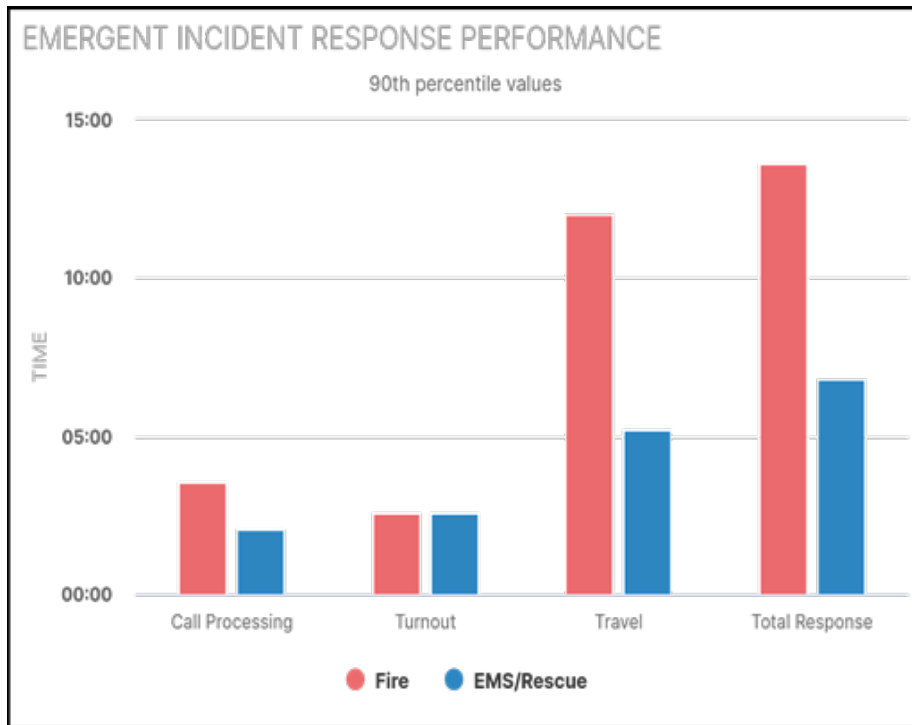


Chart 2 - Emergent Incident Response Performance

Rural	Call Processing: Fire	Turnout Time: Fire	Travel Time: Fire	Total Response: Fire	Call Processing: EMS	Turnout Time: EMS	Travel Time: EMS	Total Response: EMS
<b>Copperton 2022</b>	3:17	2:21	10:11	15:41	2:02	2:27	3:18	7:23
<b>Copperton 2023</b>	3:04	2:03	8:02	12:12	1:29	2:19	5:48	8:09
<b>Copperton 2024</b>	1:43	2:29	11:07	14:34	2:09	2:33	5:22	10:06
<b>UFA Urban 2022-2024</b>	2:43	2:20	7:17	10:51	2:15	2:06	6:11	9:11
<b>UFA Rural 2022-2024</b>	2:59	2:22	14:56	17:48	2:51	2:18	14:29	18:22
<b>NFPA 1710</b>	1:04	1:20	4:00	6:24	1:00	1:00	4:00	6:00

Table 2 – Emergent Response Times, 90<sup>th</sup> percentile values

### Copperton – 2022-2024 Total Response Times

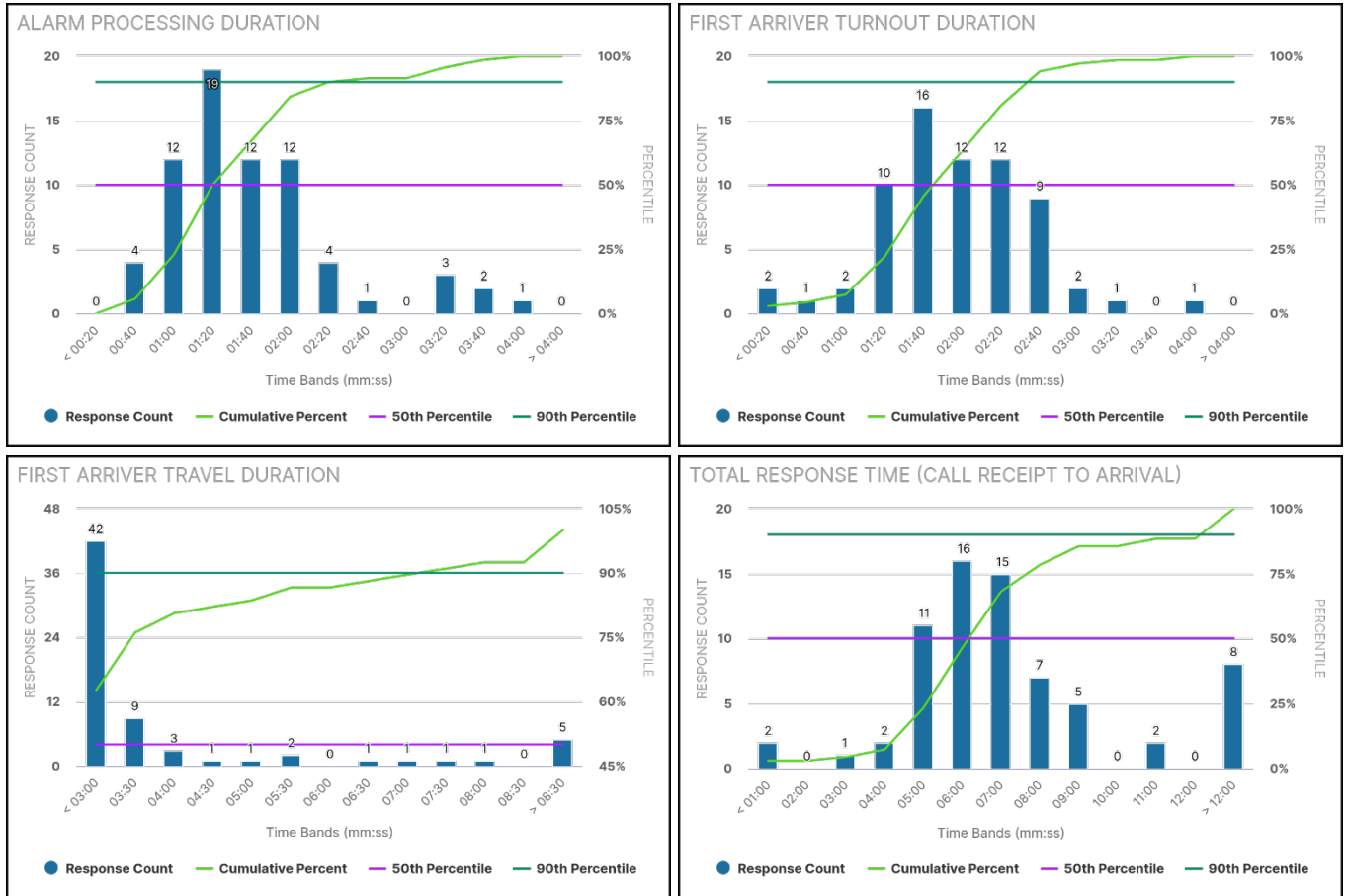
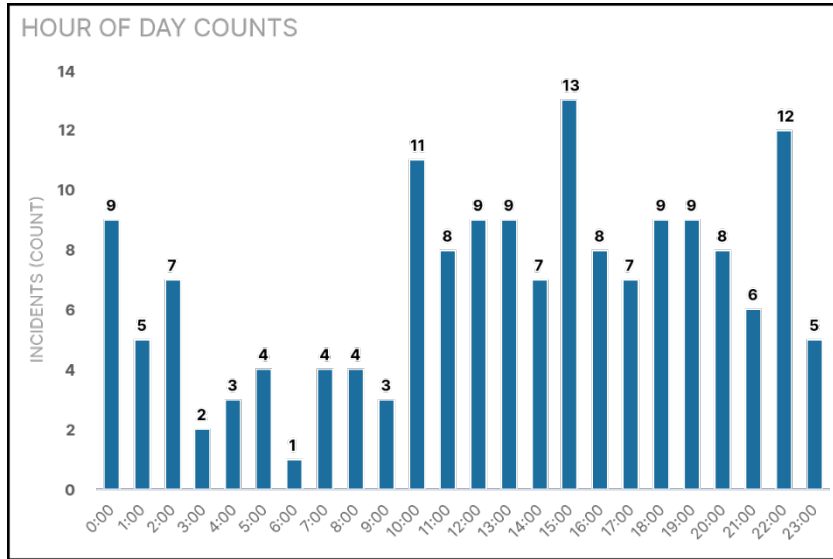


Chart 3 - Turnout and Travel Times

The charts above illustrate alarm processing, turnout, travel, and total response times for all units responding to service calls within Copperton (90<sup>th</sup> percentile).

### Copperton – 2022-2024 Incidents by Time of Day



This table demonstrates the incidents by time of day and the time of greatest demand within Copperton for all service calls.

Chart 4 – Incidents by Time of Day

### Copperton – 2022-2024 Incidents by Day of Week

This chart presents incident volume by day of the week and demonstrates that demand peaks on Tuesday, with relatively consistent call volume across the remaining days of the week.

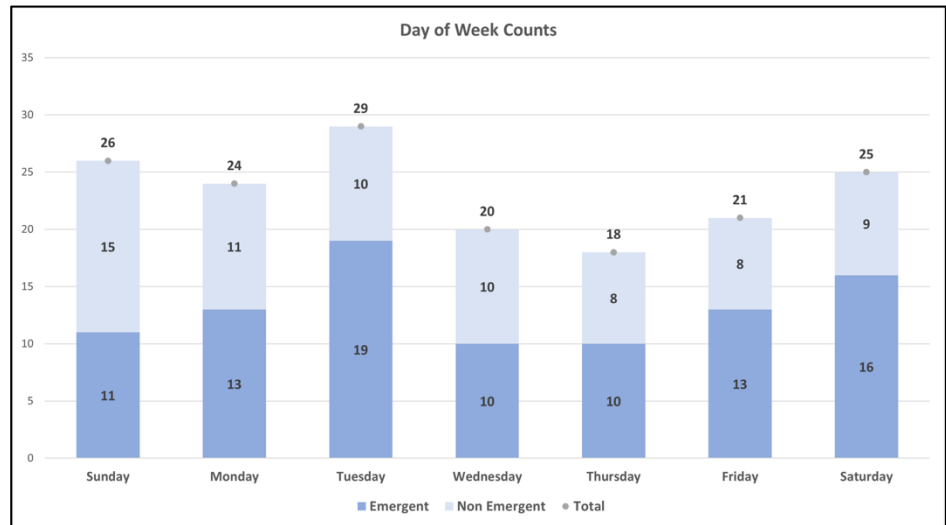


Chart 5 – Incidents by Day of Week

*Copperton – 2022-2024 EMS Calls and Ambulance Transports*

Total EMS Calls	Total Ambulance Transports	% Of EMS Calls Requiring Transport
120	50	42%

*Table 3 - EMS Calls and Ambulance Transports*

*Copperton – 2022-2024 EMS Incidents by Dispatch Type*

EMS Call Type	Incident Count
Fall	16
Sick Person	15
Heart Problem	9
Seizure	5
Stroke	5

*Table 4 - Top 5 Medical Calls*

*Copperton – 2022-2024 Fire Incidents by Dispatch Type*

NFIRS Description	Incident Count	% of Incidents
Natural Vegetation Fire	2	33.33%
Outside Rubbish Fire	1	16.67%

NFIRS Description	Incident Count	% of Incidents
Fire, Other	2	33.33%
Vehicle Fire	1	16.67%
<b>Total</b>	<b>6</b>	<b>100%</b>

*Table 5 – Incidents by Dispatch Type*

*Copperton as of 2024 – Building Occupancy Classification and Risk Categories*

Occupancy Classification	Low	Moderate	High	Max	Total
<b>Agriculture</b>	0	0	0	0	<b>0</b>
<b>Assembly</b>	1	1	0	0	<b>2</b>
<b>Commercial</b>	5	2	0	0	<b>7</b>
<b>Education</b>	0	0	0	0	<b>0</b>
<b>Government</b>	8	1	0	0	<b>9</b>
<b>Hazardous</b>	1	0	0	0	<b>1</b>
<b>Healthcare</b>	0	0	0	0	<b>0</b>
<b>High Rise</b>	0	0	0	0	<b>0</b>
<b>Industrial</b>	0	0	0	0	<b>0</b>
<b>Mixed Use</b>	0	0	0	0	<b>0</b>
<b>Residential **</b>	338	2	0	0	<b>340</b>
<b>Single Family Residential</b>	275	42	3	0	<b>320</b>
<b>Multi-family Residential</b>	17	0	1	0	<b>18</b>
<b>Unclassified/Storage</b>	6	2	0	0	<b>8</b>
<b>Utility and Miscellaneous</b>	0	0	0	0	<b>0</b>
<b>Total</b>	<b>651</b>	<b>50</b>	<b>4</b>	<b>0</b>	<b>705</b>

**\*\* Residential includes single family and multi-family. Breakdowns for those are in a separate row.**

**\*\* Residential includes manufactured homes and unclassified so multi-family and single family may not add up to residential.**

**Building Size / Considerations**

Nonresidential low: 1 - 4,999 sq ft	Residential low: 1 – 1,999 sq ft.
Nonresidential moderate: 5,000 – 9,999 sq ft	Residential moderate: 2,000 – 3,999 sq ft.
Nonresidential high: 10,000 – 99,999 sq ft	Residential high: 4,000 – 9,999
Nonresidential max: ≥ 100,000 sq ft	Residential max: ≥ 10,000

*Table 6 – Building Occupancy and Risk Categories*

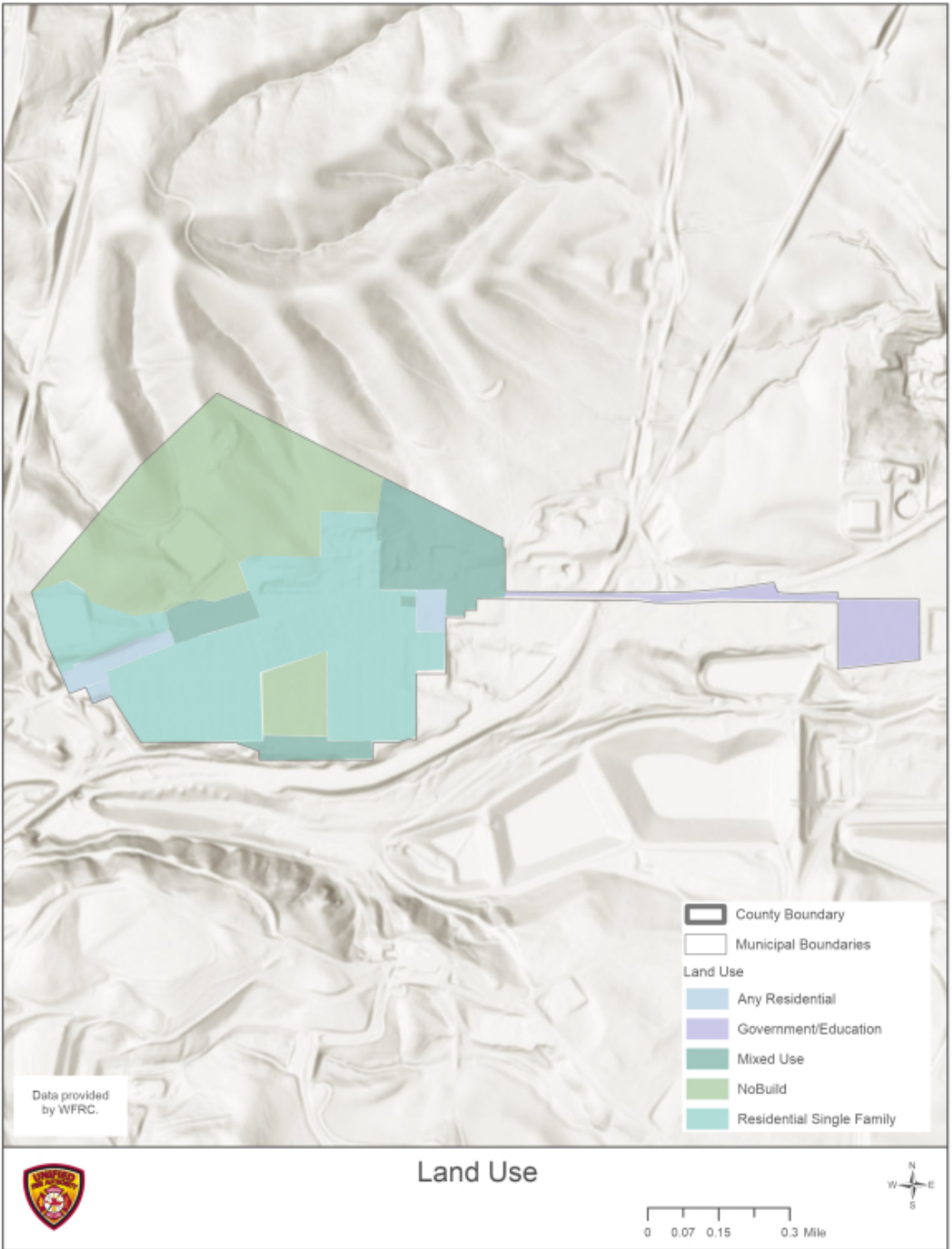
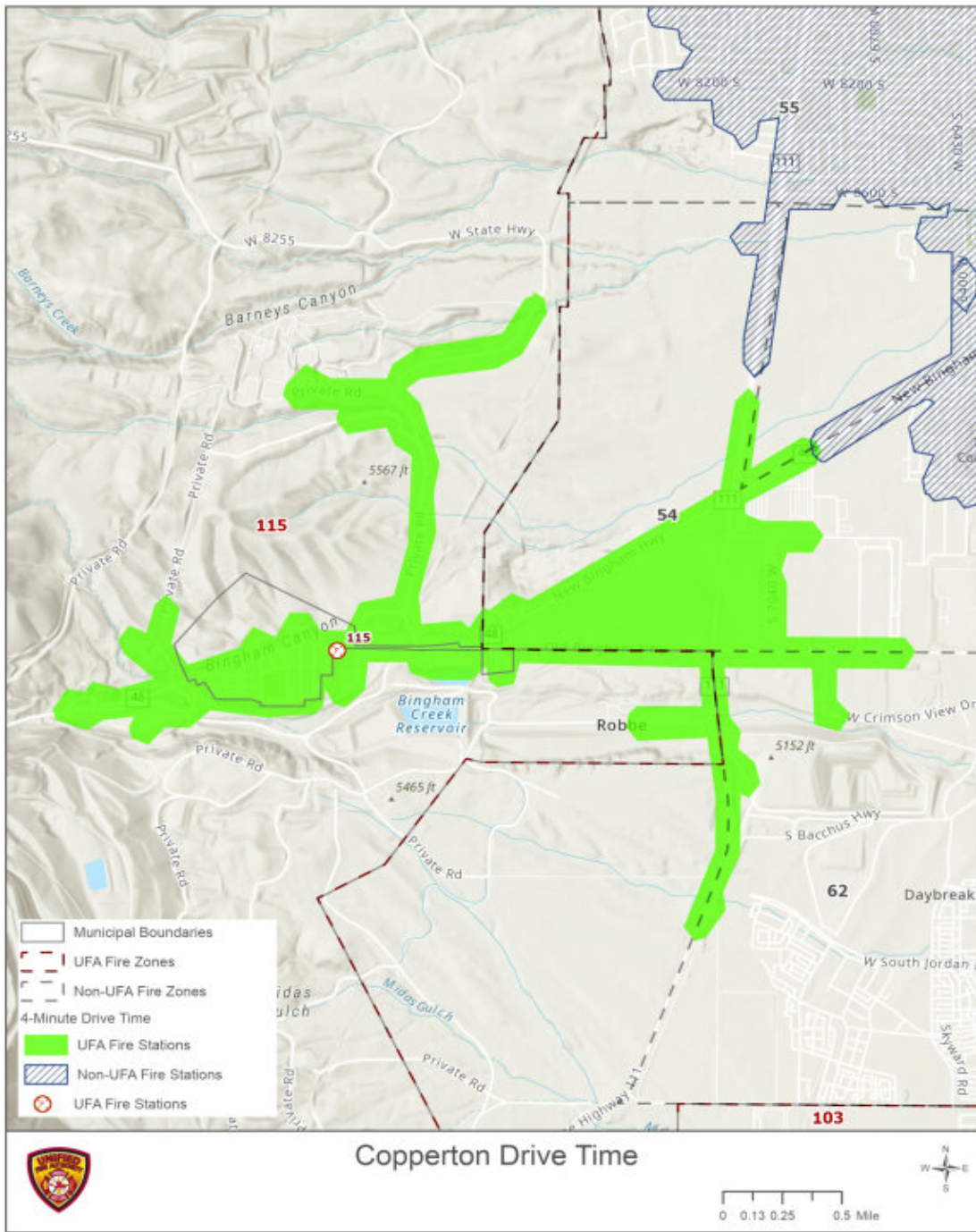


Image 1 - Land Use



**Four Minute Response Times - UFA and Non-UFA Stations**

September 2022

- Municipalities
- Fire Zones
- UFA Fire Stations
- Non-UFA Fire Stations
- 4 Minute Response Times Non-UFA Fire Stations
- 4 Minute Response Times UFA Fire Stations

Image 2 - 4-Minute Travel Times, UFA and Aid

### Copperton – First Arriver Travel Times

The following maps demonstrate the 90<sup>th</sup> percentile of travel times based off the last three years of historical data (2022-2024). The darker the color is, the more delayed the response, with the green and light colors demonstrating below or near target times. The darker colors on the bar within the key demonstrating longer travel times by apparatus. This map's drive times (or travel times) are based off the current NFPA 1710 standard of four minutes (90<sup>th</sup> percentile) from notification of the alarm to the arrival of the first arriving apparatus — not an adopted standard by UFA. In 2024, within Copperton, the 90<sup>th</sup> percentile drive time is 11:50 for fire and 4:50 for EMS, or a combined 90<sup>th</sup> percentile drive time of 7:06.

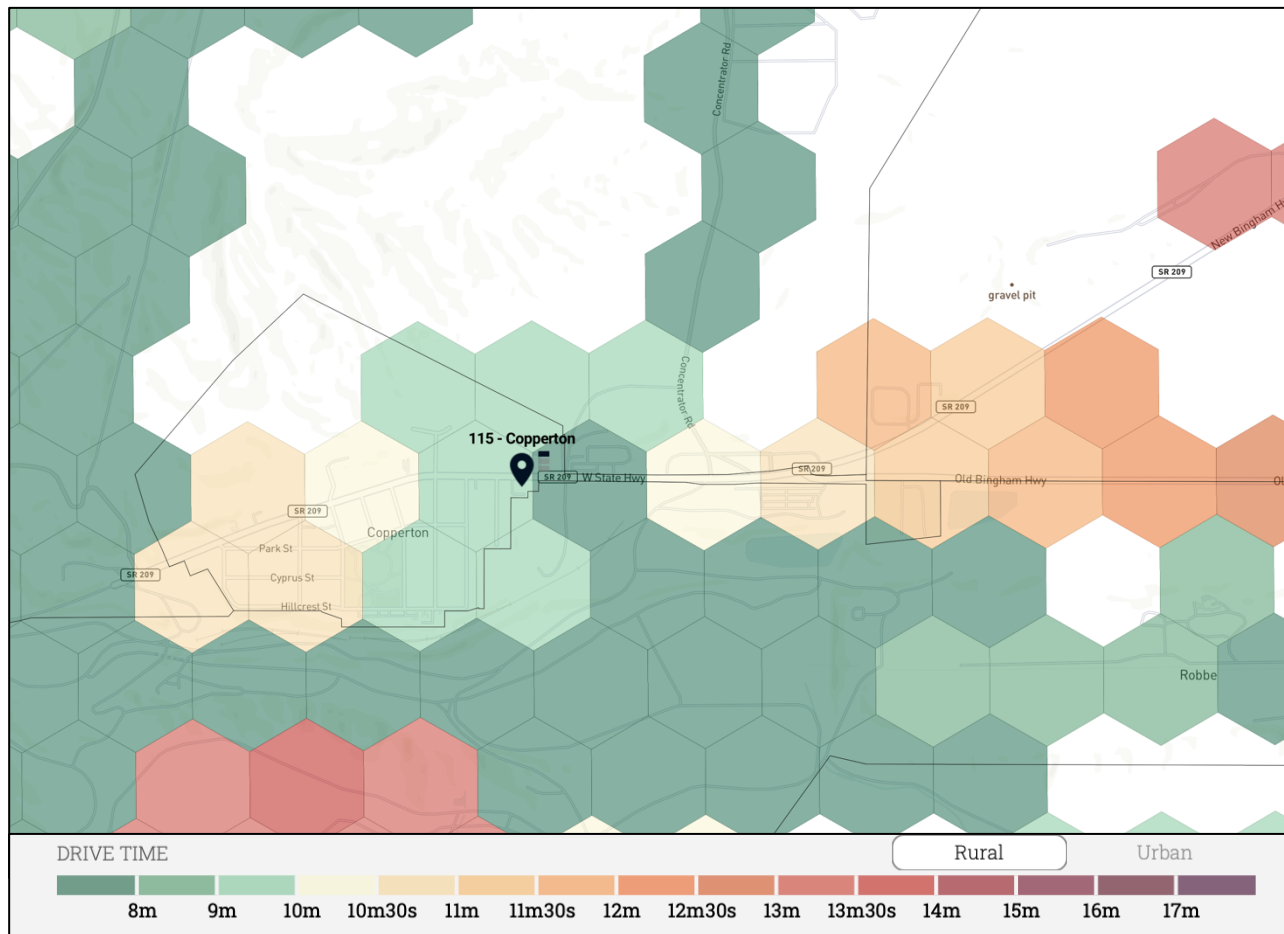
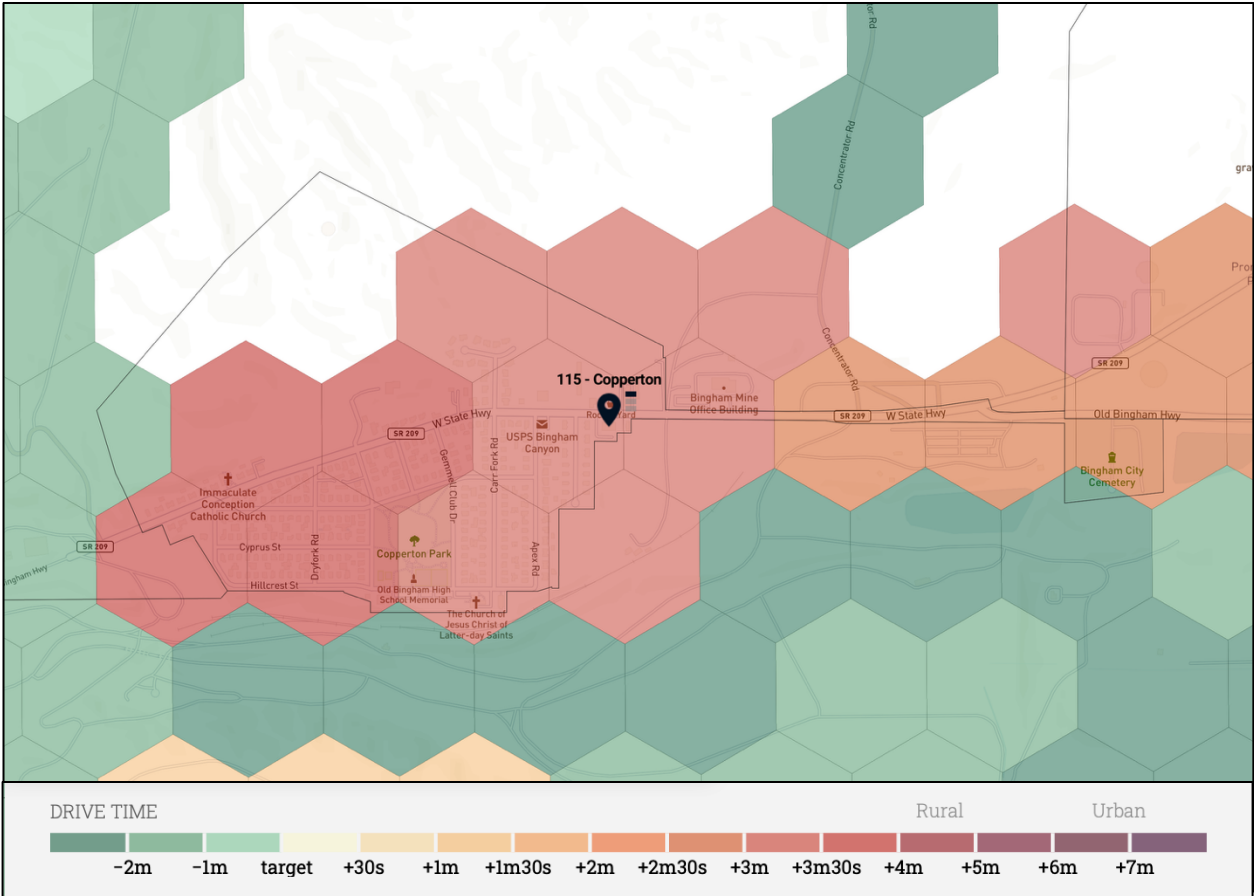


Image 3 - Emergent Response Times - All Aid

*Copperton – Residential Fire Effective Response Force (17 FF)*

This map demonstrates the coverage of a multi-unit response to a residential fire based off all apparatus being within their station. The green to light yellow demonstrates the ability to have seventeen firefighters (a residential fire effective response force) on scene based off a residential urban fire force response. This map’s drive times (or travel times) are based off the current NFPA 1710 standard of eight minutes (90<sup>th</sup> percentile) from notification of the alarm to the arrival of the initial full alarm assignment (a minimum of 17 firefighters) for a residential, low, or medium hazard assembly — not an adopted standard by UFA. Based off predictive data, the 90th percentile for 17 firefighters to arrive on scene is 11:20.



*Image 4 - Response Times – Residential Fire Effective Response Force (17 ERF)*

### Copperton – Commercial Fire Effective Response Force (28 FF)

This map demonstrates the coverage of a multi-unit response to a commercial fire based off all apparatus being within their station. The green to light yellow demonstrates the ability to have twenty-eight firefighters (a commercial fire effective response force) on scene based off a residential urban fire force response. This map's drive times (or travel times) are based off the current NFPA 1710 standard of ten minutes and 10 seconds (90<sup>th</sup> percentile) from notification of the alarm to the arrival of the initial full alarm assignment (a minimum of 28 firefighters) for a commercial, high hazard or high-rise assembly — not an adopted standard by UFA. Based off predictive data, the 90th percentile for 28 firefighters to arrive on scene is 13:40.

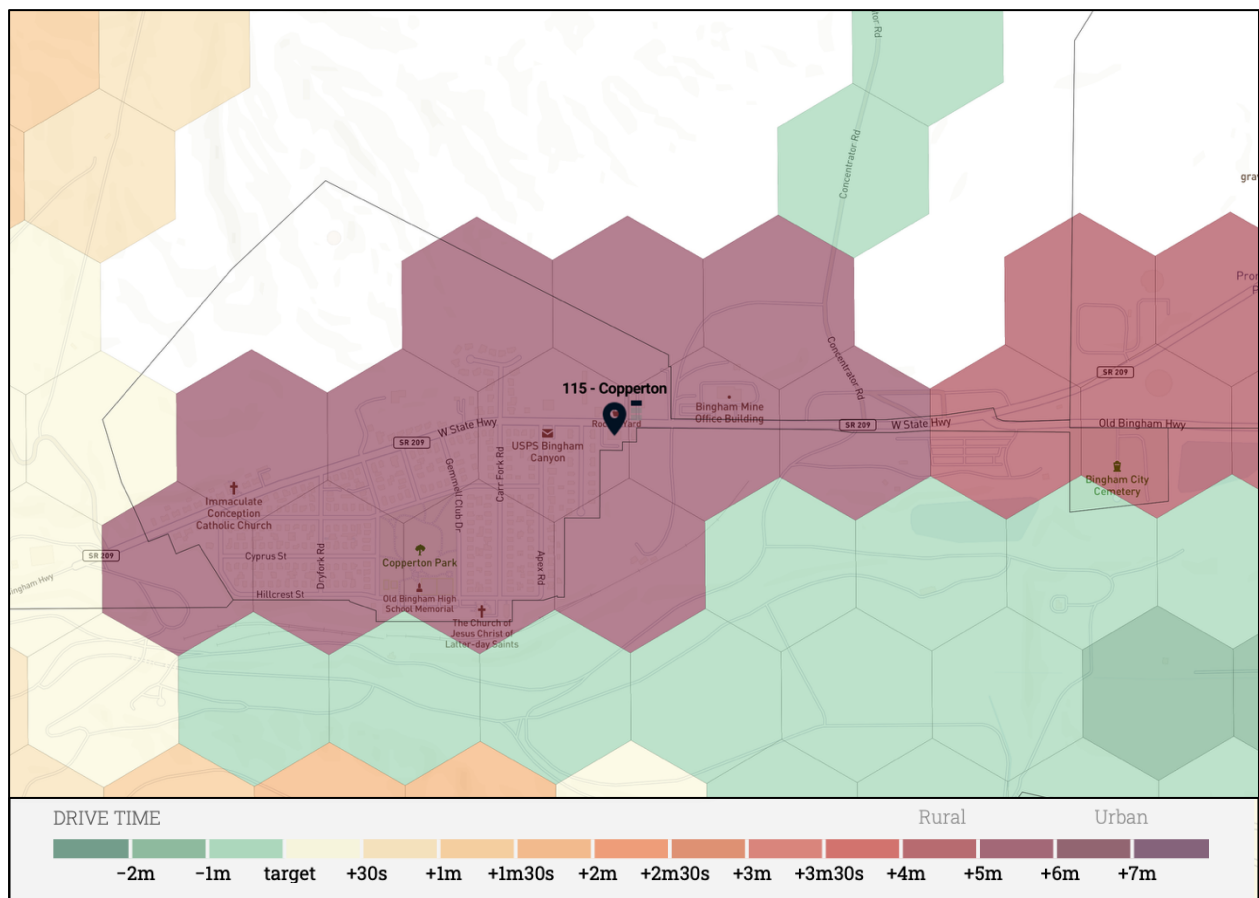


Image 5 - Response Times – Commercial Fire Effective Response Force (28 FF)

## Copperton Risk Assessments

Infrastructure – Transportation	Infrastructure – Dams	Earthquake Liquefaction	Earthquake Faults	Avalanche	Unreinforced Masonry	Wildland Urban Interface	Tier II Sites	Hospitals	Schools	≥100,000 sq ft Structures	Residential Population
Low	Low	Low	Low	Low	Mod	Mod	Low	Low	Low	Low	Low

Table 7 – Copperton Hazard Matrix

<b>Transportation: Low Risk = 0-99 Linear Miles; Moderate Risk = 100-199 Linear Miles; High Risk = &gt;200 Linear Miles</b>
<b>Dams: Low Risk = 0-3; Moderate Risk = 4-6; High Risk = ≥7</b>
<b>Liquefaction: The areas of liquefaction vary throughout the valley, with areas of high susceptibility running South and East from the Great Salt Lake</b>
<b>Earthquake Faults: Low Risk = 0-30,000 LF of fault line; Moderate Risk = 30,001-60,000 LF of fault line; High Risk = ≥60,001 LF of fault line</b>
<b>Unreinforced Masonry: Low Risk = 0-100; Moderate Risk = 101-1,000; High Risk = ≥1,001</b>
<b>Wildland Urban Interface: Low Risk = 0-25% WUI; Moderate Risk = 26-50% WUI; High Risk = ≥51% WUI</b>
<b>Tier II Sites: Low Risk = 1-5; Moderate Risk = 6-10; High Risk = ≥11</b>
<b>Hospitals: Low Risk = 0; Moderate Risk = 1; High Risk = ≥2</b>
<b>Schools: Low Risk = 0-5; Moderate Risk = 6-10; High Risk ≥11</b>
<b>100,000 sq ft Buildings: Low Risk = 0-5; Moderate Risk = 6-14; High Risk = ≥15</b>
<b>Population: Low Risk = 1-19,999; Moderate Risk = 20,000-39,999; High Risk = ≥40,000</b>

### Infrastructure – Transportation

The primary roadway that runs to Copperton is State Road 209 which runs east/west from Mountain View Corridor and Bacchus Highway. There are 0 linear miles of Interstate/US Highway, 1.29 linear miles of State Highways, and 4.45 total linear miles of roadway. UTA also runs bus routes to Copperton. Copperton is in the low-risk category for road infrastructure.

### Infrastructure – Water

There is one water district within Copperton, the Copperton Improvement District.

### Infrastructure – Dams

There are zero identified dams within Copperton. Copperton is in the low-risk category for dam infrastructure.

### Natural Hazards

Within Copperton, there are no concerns with avalanche areas. Copperton is in the low-risk category for avalanches. There are no identified fault lines that run through Copperton, although there is a fault line directly west of the township. Copperton is in the

low-risk category for liquefaction and low-risk category for fault lines. One of the biggest hazards that occur within an earthquake scenario is the number of unreinforced masonry (URM) buildings. Within Copperton, there are an estimated 88 URM's, which constitutes about 0.35% of the overall URM's within UFA's response areas. Copperton is in the moderate-risk category for unreinforced masonry.

#### **Wildland Urban Interface**

There is moderate risk of urban interface fires within Copperton and within the surrounding Unincorporated Salt Lake County areas directly adjacent to the municipal boundaries. One of the primary hazards is the lack of egress routes going out of Copperton. Copperton is in the moderate-risk category for Wildland Urban Interface.

#### **Hazardous Materials / Tier II Sites**

There is one identified HazMat/Tier II Sites within Copperton, which is in the low-risk category.

#### **Hospitals**

Copperton has no standalone hospitals, which place it in the low-risk category.

#### **Schools**

Copperton has zero elementary schools, zero middle schools, and zero high schools within boundaries, which places it in the low-risk category.

#### **Target Hazards – Structures**

Some of the target-hazard occupancies in Copperton include:

- Kennecott/ Rio Tinto Concentrator – 8640 W 10200 S
- Kennecott/ Rio Tinto 25-megawatt solar farm – 8640 W 10200 S

#### ***Life and Property Loss***

From 2022-2024, there have been zero fatalities attributed to fire. There has been a total estimate of \$0 of property loss and a total estimate of \$0 of content loss due to fire.

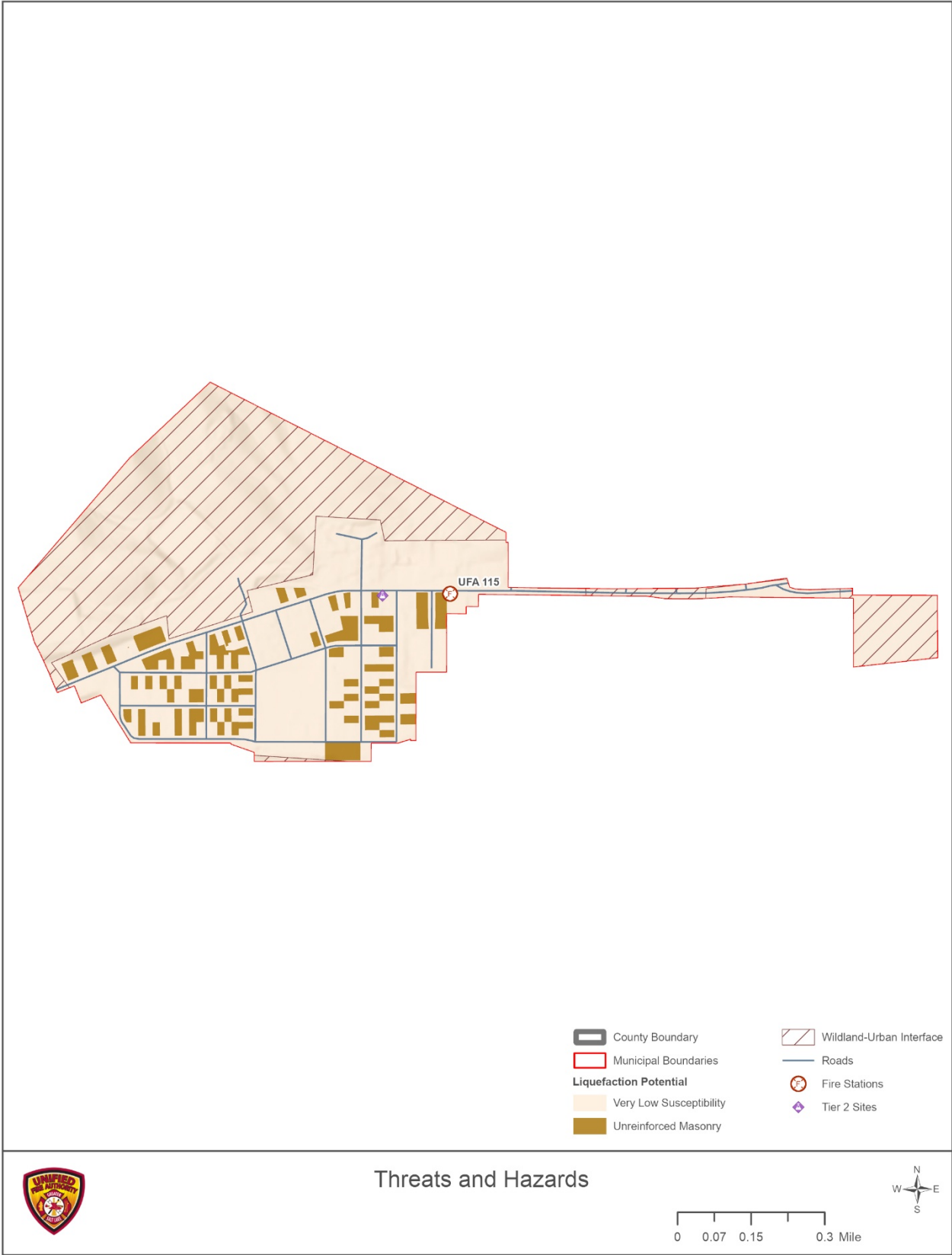


Image 6 - Threats and Hazards

