



Unified Fire Quarterly Report

EMIGRATION TOWNSHIP

Quarter 1
Jan. 1, 2021 - Mar. 31, 2021

Call Volume

TOTAL INCIDENTS

10

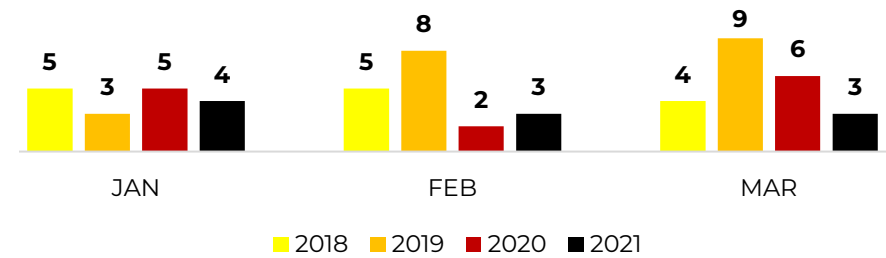
EMERGENT

2

% EMERGENT

20%

Four Year Monthly Comparison



Call Type

FIRE DISPATCHES

- N/A

TOP **EMS** DISPATCHES

- Unknown Problem (1)
- Unconscious (1)
- Not Dangerous (on the ground) (1)
- Possibly Dangerous (on the ground) (1)

TOP **OTHER** DISPATCHES

- Water Problem (1)
- Public Service Assistance (1)
- Electrical Wiring/Equipment Problem (1)

Incoming Unit Responses (Engine, Ladder, Ambulance)

Station	Units	%	Station	Units	%
119 - Emigration	8	61.54%			
106 - E. Millcreek	4	30.77%			
101 - Millcreek	1	7.69%			
Total	13	100%			

*Most incidents require multiple unit responses

Emergent Total Time

50TH PERCENTILE

09:48

90TH PERCENTILE

09:48

*Dispatch to Arrival (does not include call processing time)

Emigration Township Liaison

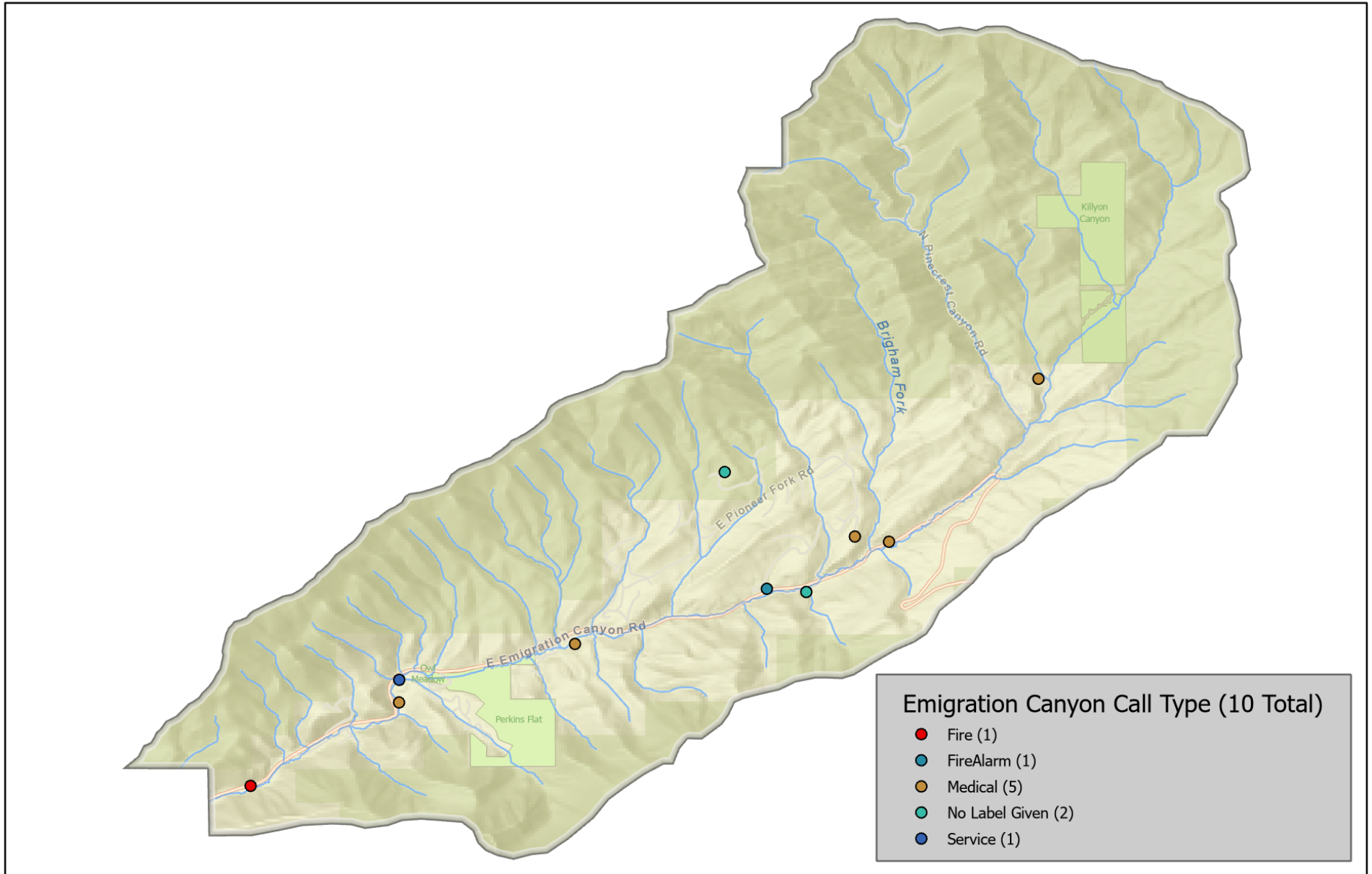
Captain Michael Conn

(801) 809-2210

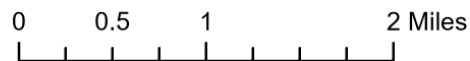
mconn@unifiedfire.org



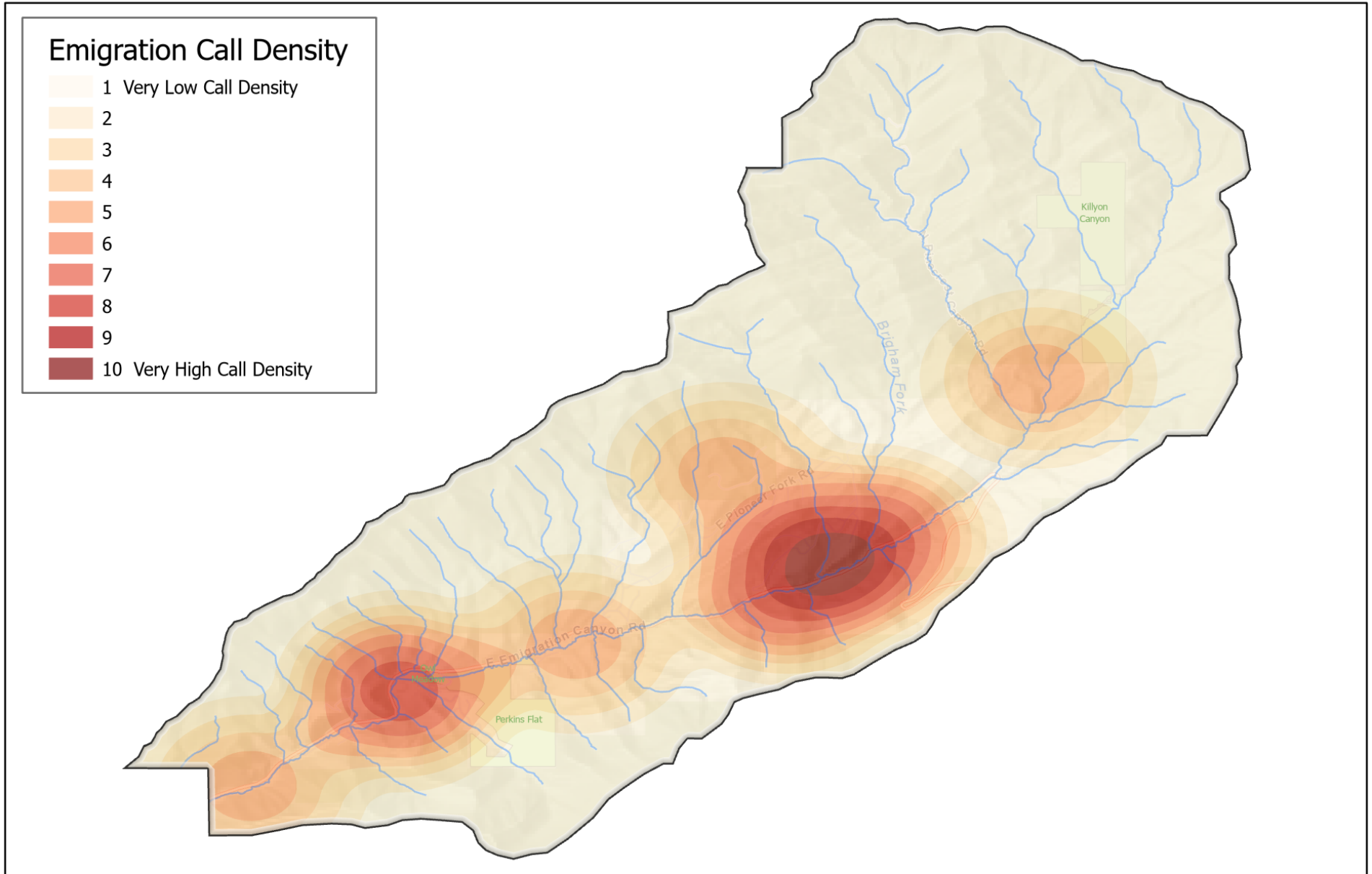
UFA CALL TYPE January 1 to March 31 2021



Emigration Canyon Metro Township



UFA CALL DENSITY January 1 to March 31 2021



Emigration Canyon Metro Township

