

# SPECIAL ENFORCEMENT

---

## Statement of Purpose and Services Provided

Arson and Explosive related incidents are considered two of the most dangerous criminal activities that threaten our citizens. The need exists to protect the citizens of our jurisdiction from loss of life and property by reducing the crime of arson, arson-related crimes, improvised explosive devices (IEDs) and the prevention of future violent crimes. The Special Enforcement Division (SED) addresses this need by establishing a sound foundation of effective enforcement, while focusing on the apprehension of the offender in partnership with Local, State and Federal law enforcement agencies. The team utilizes two highly-trained and certified canines (K9s) that assist with accelerant and explosives detection. The SED houses an FBI accredited Bomb Squad and is a member of the Joint Terrorism Task Force, support is also provided to law enforcement partners in tactical and other enforcement operations while also providing Bomb Squad coverage to neighboring jurisdictions and counties.

Special Enforcement conducts origin and cause investigations for fire related calls for service, if the cause is criminal, we investigate and apprehend offenders. Special Enforcement performs render safe procedures for IED, bombs and explosive related calls; investigation of crimes associated with explosives, IED, HME, and incendiary devices etc. Law enforcement agencies served by the UFA are supported for explosive related emergencies and tactical operations; K9 support across the Wasatch Front for both accelerant and explosive detection; permits for commercial blasting; disposal of found explosives, fireworks and ammunition; and arrest and apprehension of offenders. Special Enforcement utilizes 2 Explosive Detecting K9, 1 ATF certified Accelerant Detecting K9. Special Enforcement also manages the SWAT Paramedic Program, conducts Professional Standards investigations as needed or assigned, and conducts background investigations for new-hire personnel.

## Division Manager Budget Message

The Special Enforcement Division is tasked with a very complex mission. The four areas of Special Enforcement provide a unique and necessary service to the public not supplied by any of our public safety partners served by UFA. We stand by and make a commitment to the community to protect them from crimes associated with the use of fire, explosives, fire as a weapon and to provide lifesaving medical care in extremely hostile and dynamic environments.

Our goal is to meet the priorities of the UFA Strategic Plan, while striving to meet industry standards and best practices through training, equipment, operational readiness, responses times, and mitigation skills. The culture created is one of pride and ownership which is often modeled by public safety partners for readiness and response.

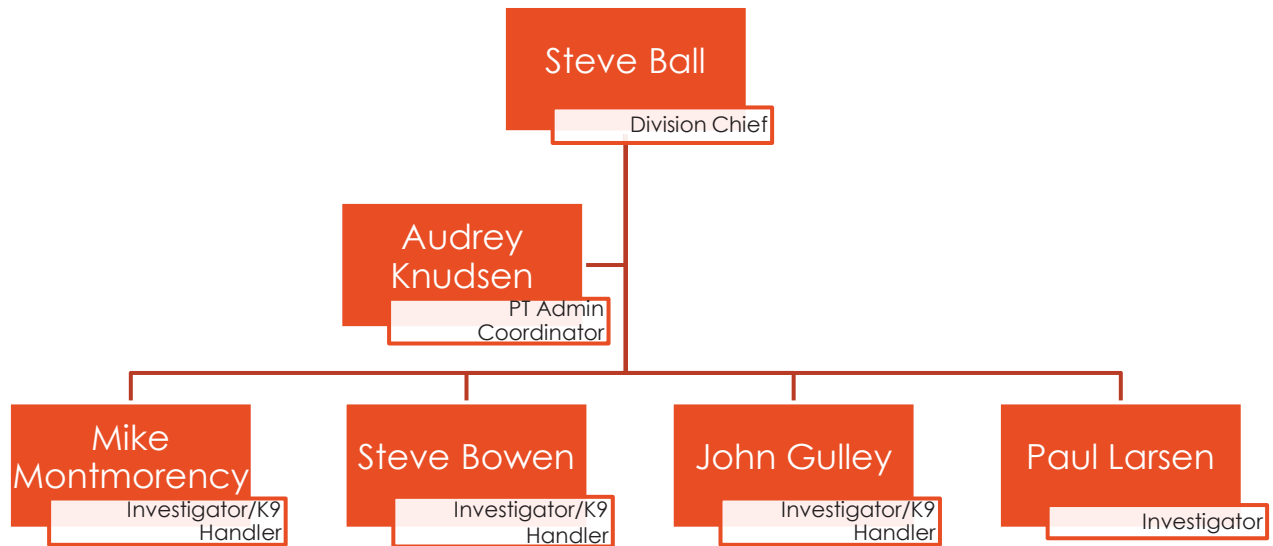
The best way to invest in Special Enforcement personnel is by responsibly funding training and equipment, providing stand-by pay, and by forming an apprentice program with succession planning for future needs of the division.

In May 2019, Special Enforcement will be retiring Explosive Detecting canine Ally after a long career with the US Marine Corps and UFA. Staff will be conducting an evaluation on the operational impact of utilizing one explosive detecting K9 team versus two, and may find that having one team reduces overtime expenditures and event billing revenue. Future options include adopting a shelter dog and training in house for the cost of several hundred dollars, purchasing a trained K9 from an accredited kennel for up to \$25,000, or maintaining only one K9 team.

Special Enforcement has submitted a request for an additional full-time Investigator position, further details are available in the Chief's Budget Message.

# SPECIAL ENFORCEMENT

## Organizational Structure



## Staffing (FTEs)



# SPECIAL ENFORCEMENT

---

## Performance Measures

- Respond to 100% of calls for service for fire related investigations
- Respond to 100% of calls for service for explosive related emergencies and investigations
- Respond to SWAT call-outs and operations with sufficient medical support
- Conduct thorough fact finding investigations for Professional Standards
- Conduct thorough background investigations for prospective employees to ensure the best candidates are selected for employment
- Provide public and private outreach and training to public safety partners and companies

<b>Incidents/Cases</b>	<b>2016</b>	<b>2017</b>	<b>2018</b>
<b>Fire related</b>	256	233	214
<b>Explosive/bomb</b>	133	98	94
<b>SWAT Medic activations</b>	44	57	54
<b>Tactical Bomb Tech</b>			2

## FY18/19 Accomplishments

- DC Ball completed the FBI Tactical Bomb Tech certification course in New York
- DC Ball completed the FBI/Hazardous Device School Weapons of Mass Destruction (WMD) Stabilization Level III course – Huntsville, AL
- DC Ball awarded UPD SWAT Medal of Valor
- Inv Montmorency Hazardous Devices School Bomb Tech recertification (6<sup>th</sup> time)
- Inv Montmorency K9 Ally recert National Police K9 Association and National Odor Recognition Test (NORT)
- Inv Montmorency 22 K9 deployments
- Inv Montmorency judged National Police Canine trial testing for Narcotics and Explosives
- Inv Bowen ATF accelerant detecting canine recert
- Inv Bowen 29 accelerant detecting canine deployments
- Inv Bowen elected second VP International Association of Arson Investigators Utah Chapter
- Inv Gulley awarded UFA Medal of Valor
- Inv Gulley explosive detecting K9 recert National Police Canine Association and NORT
- Inv Gulley, DC Ball and Inv Larsen deployed with FBI on domestic terrorist case (TBT)
- Inv Gulley and DC Ball respond with Department of Public Safety on tactical bomb deployment
- Inv Larsen obtained Fire Investigations Tech certification
- Inv Larsen successful case resolution of West Valley homicide arson case
- Special Enforcement hosted NORT certification course
- Special Enforcement co-hosted FBI Tactical Bomb Tech course
- Provided over 20 public and private outreach training session to over 400 individuals with over 88 man hours of instruction

## FY19/20 Action Items

- Continue apprentice program and formalize succession planning.
  - Formalize process with Professional Development
- Continued Support for all public safety agencies served by UFA
- Integrate Tactical Bomb Tech program to SWAT Teams served by UFA
- Enhance response capability to WMD and Tactical Bomb incidents
- Continue to improve and refine background Investigations for new hire personnel

# SPECIAL ENFORCEMENT

---

## Budget Detail

### Revenue

#### **Event Billings \$20,000**

Fees are charged for events provided by third parties for event security and bomb sweeps. These types of events are mass gatherings not sponsored by UFA or a member jurisdiction, examples are; the Sundance Film Festival, marathons, Iron Man Races, and ski competitions. In 2018 SED billed Park City PD \$4,080 for the FIS World Ski Championships and \$6,840 for the Sundance Film Festival, other events total more than \$22,000.

#### **Blast Permit Fees \$2,450**

Blasting permits and fees are collected and fall in line with other permits issued by UFA at \$350 per annual permit and \$75 per site fee. The permit process and requirements are in accordance with International Fire Code section 5601.2.4.1. The permit fees include a UFA Bomb Technician for onsite inspection for permit and code compliance, seven blasting permits were issued last year.

### Personnel

#### **Overtime \$115,000**

The overtime budget is primarily used for calls for service after business hours, on weekends, and on holidays, in addition to pay for the PT Investigator position for training and calls.

Overtime is also utilized to fund the apprenticeship program for Bomb Tech and Fire Investigator. The establishment of the program last year was successful, Through a selection process, two individuals were chosen to participate in training exercises and responses with the intent to create a succession plan. These funds are used to identify and select personnel from Operations who may have interest in the work of Special Enforcement as a viable career path. The apprentice attends training and seminars as available and responds to incidents in a support function. This position is estimated at \$30 per hour and will require approximately 100 hours annually (\$3,000 total).

#### **Standby Pay \$16,785**

This request is for the continuation of additional compensation for positions that are required to be on-call. Every week of the year an Arson/Bomb Technician is required to be on-call for after hour's fire and explosive-related response. This individual must be available at any time, severely affecting/limiting their personal time off. If no calls for service occur, the on-call receives no compensation for this disruption to their family and personal lives, therefore, 8 hours of accrued time is provided for each week on standby (8 hours x 52 weeks = 416 hours), allowing for leave throughout the year with any remaining time in the bank paid out annually.

# SPECIAL ENFORCEMENT

---

## Capital Outlay

None

## Non-Personnel Detail by Account

<b>Account</b>	<b>Description</b>	<b>Account Total</b>
<b>10-86-250</b>	<b>EDUCATION, TRAINING &amp; CERTIFICATION</b>	<b>\$2,000</b>
	Course fees, training materials, books and publications	
<b>10-86-305</b>	<b>MAINTENANCE OF MACHINERY &amp; EQUIPMENT</b>	<b>\$1,500</b>
	Parts and service for existing equipment	
<b>10-86-350</b>	<b>PROFESSIONAL FEES</b>	<b>\$1,000</b>
	Registration of specialized equipment, Database access	
<b>10-86-410</b>	<b>SMALL EQUIPMENT NON-CAP</b>	<b>\$15,000</b>
	Hand tools, batteries, supplies, training and duty ammunition, explosives, special munitions and tools, miscellaneous supplies and tools	
<b>10-86-414</b>	<b>CANINE EXPENSES</b>	<b>\$5,000</b>
	Dog food, vet and medical expenses, dog leashes and collars, misc. items for care for K9	
<b>10-86-415</b>	<b>MEMBERSHIPS &amp; SUBSCRIPTIONS</b>	<b>\$1,000</b>
	IABTI, IAAI, NAFI, NPCA membership fees	

**SPECIAL ENFORCEMENT**

		ACTUAL	ACTUAL	ACTUAL	BEGINNING	FINAL	PROPOSED	TENTATIVE	ADOPTED	% INCREASE
	GL	FY15-16	FY16-17	FY17-18	FY18-19	FY18-19	FY19-20	FY19-20	FY19-20	BEGINNING
		SE 86	SE 86	SE 86	SE 86	SE 86	SE 86	SE 86	SE 86	FY19 to FY20
										BUDGET
<b>REVENUE</b>										
EVENT BILLING	1035410	0	0	10,691	6,000	6,000	20,000	20,000	20,000	233.3%
BLASTING PERMITS	1039510	1,200	1,250	0	900	900	2,450	2,450	2,450	172.2%
GRANTS & DONATIONS	1033200	84,661	0	35,911	0	4,715	0	0	0	0.0%
<b>TOTAL REVENUE</b>		<b>85,861</b>	<b>1,250</b>	<b>46,601</b>	<b>6,900</b>	<b>11,615</b>	<b>22,450</b>	<b>22,450</b>	<b>22,450</b>	<b>225.4%</b>
<b>PERSONNEL EXPENDITURES</b>										
SALARIES	100	352,952	363,881	376,072	431,766	431,766	448,892	451,198	451,198	4.5%
OVERTIME	120	113,428	114,166	123,034	115,000	115,000	115,000	115,000	115,000	0.0%
STANDBY PAY	129	0	0	0	0	0	16,785	16,785	16,785	100.0%
OTHER BENEFITS	130	188,866	197,695	201,219	7,998	7,998	9,996	9,996	9,996	25.0%
MEDICAL/DENTAL/LIFE INSURANCE	132	0	0	0	73,166	73,166	75,697	75,697	75,697	3.5%
RETIREMENT CONTRIBUTIONS	133	0	0	0	115,088	115,088	120,615	121,167	121,167	5.3%
PAYROLL TAX	134	0	0	0	19,990	19,990	23,699	23,732	23,732	18.7%
WORKERS COMP	135	15,554	12,152	11,574	12,133	12,133	16,695	16,765	16,765	38.2%
UNIFORM ALLOWANCE	140	3,625	4,200	4,200	4,200	4,200	4,200	4,200	4,200	0.0%
VAC/SICK PAYOUTS	160	22,970	38,148	0	0	0	0	0	0	0.0%
<b>TOTAL PERSONNEL EXPENDITURES</b>		<b>697,394</b>	<b>730,242</b>	<b>716,099</b>	<b>779,341</b>	<b>779,341</b>	<b>831,579</b>	<b>834,540</b>	<b>834,540</b>	<b>7.1%</b>
<b>NON PERSONNEL EXPENDITURES</b>										
EDUCATION & TRAINING & CERT	250	1,261	1,006	415	2,000	2,000	2,000	2,000	2,000	0.0%
GRANT EXPENDITURES	266	84,215	0	35,000	0	4,715	0	0	0	0.0%
MAINT. OF MACHINERY & EQUIP	305	140	272	9	1,500	1,500	1,500	1,500	1,500	0.0%
PROFESSIONAL FEES	350	2,434	352	359	1,000	1,000	1,000	1,000	1,000	0.0%
SMALL EQUIP. NONCAP	410	50,463	4,026	20,193	15,000	15,000	15,000	15,000	15,000	0.0%
CANINE EXPENSES	414	0	5,478	5,248	5,000	5,000	5,000	5,000	5,000	0.0%
MEMBERSHIPS & SUBSCRIPTIONS	415	975	745	840	1,000	1,000	1,000	1,000	1,000	0.0%
TRAVEL & TRANSPORTATION	425	5,265	0	0	0	0	0	0	0	0.0%
<b>TOTAL NON PERSONNEL EXPENDITURES</b>		<b>144,753</b>	<b>11,879</b>	<b>62,064</b>	<b>25,500</b>	<b>30,215</b>	<b>25,500</b>	<b>25,500</b>	<b>25,500</b>	<b>0.0%</b>
<b>CAPITAL OUTLAY EXPENDITURES</b>										
CAPITAL OUTLAY-MACH. & EQUIP.	216	0	0	18,000	0	0	0	0	0	0.0%
<b>TOTAL CAPITAL OUTLAY EXPENDITURES</b>		<b>0</b>	<b>0</b>	<b>18,000</b>	<b>0</b>	<b>0</b>	<b>0</b>	<b>0</b>	<b>0</b>	<b>0.0%</b>
<b>TOTAL EXPENDITURES</b>		<b>842,147</b>	<b>742,121</b>	<b>796,163</b>	<b>804,841</b>	<b>809,556</b>	<b>857,079</b>	<b>860,040</b>	<b>860,040</b>	<b>6.9%</b>
<b>NET EFFECT ON UFA GENERAL FUND BUDGET</b>		<b>-756,286</b>	<b>-740,871</b>	<b>-749,562</b>	<b>-797,941</b>	<b>-797,941</b>	<b>-834,629</b>	<b>-837,590</b>	<b>-837,590</b>	<b>5.0%</b>