

DXT/QXT Pro (500° Colorization)

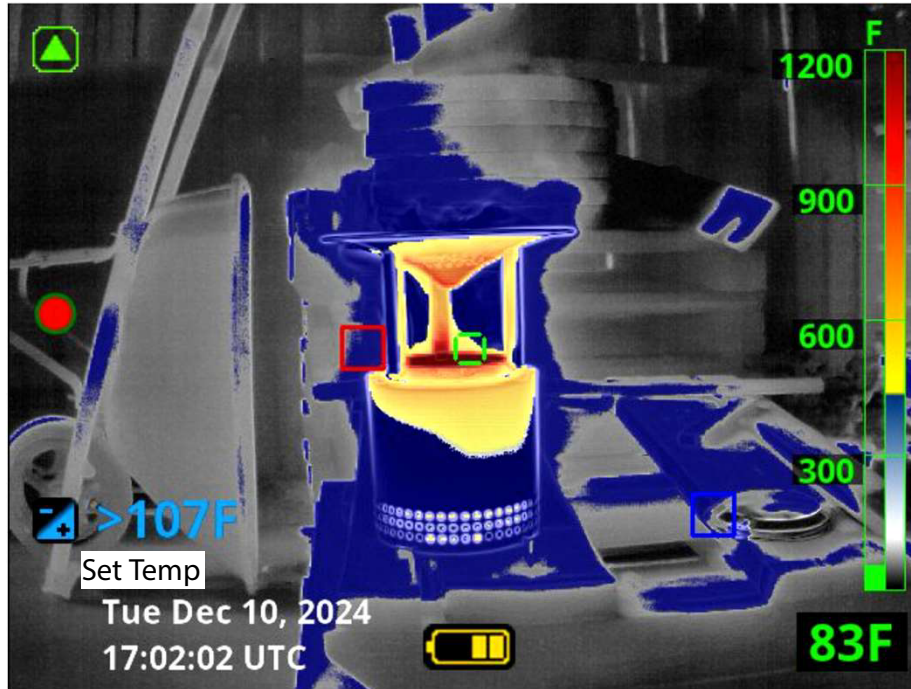
Power Button LED	Imager State
Solid White	Imager is powered ON
Pulsing Green	Imager is charging
Solid Green	Imager is fully charged (on charger)
Flashing Orange	Error condition (problem with the imager or charging system)
Alternating Flashing Orange/Red	Error condition, battery is too hot or too cold to charge



Color	Approximate Temp
Yellow	500 F °
Orange	800 F °
Red	1000 F °
Dark Red	>1200 F °

Indicator		Pro Time Remaining
	4 Green	4.5 Hours – 6 Hours
	3 Green	3 Hours – 4.5 Hours
	2 Yellow	1.5 Hours – 3 Hours
	1 Red	5 Minutes – 1.5 Hours
	1 Flashing Red	5 Minutes

QXT Pro Basic Package Features



Additional features

Zoom (2x, 4x)	<ol style="list-style-type: none"> 1. Press "A" Button for Menu scroll to magnify glass 2. Hold "A" to activate 3. Press "A" or "B" for magnification 4. Hold "A" button or push power button to turn Zoom off
HAD and CAD	Once unit is turned on both Hot and Cold Area Detectors will turn on

Thermal Throttle 2.0v

(Thermal throttle will no be available if 5% of the picture is showing colorization)

1. Press "A" Button for Menu scroll to the blue image
2. Hold "A" Button down to activate a blue image for anything hotter than the set temp
3. Press "A" to lower temp threshold
4. Press "B" to increase temp threshold
5. Hold "A" button or push power button to turn Thermal Throttle off