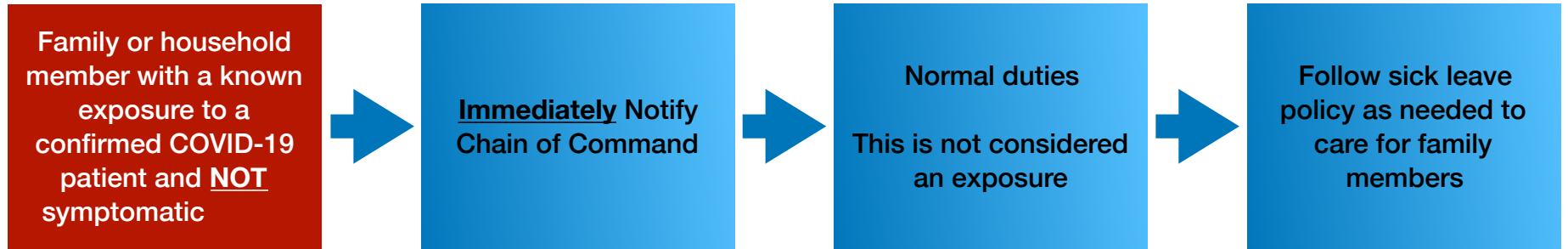


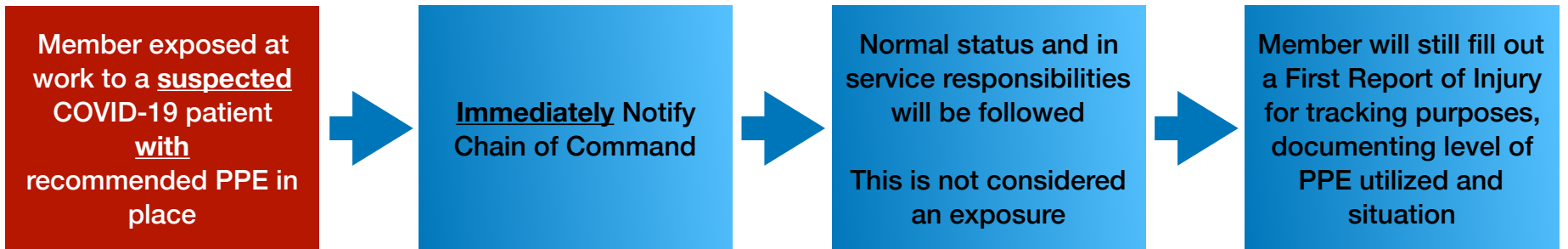


Unified Fire Authority  
COVID-19 Exposure Flow Chart

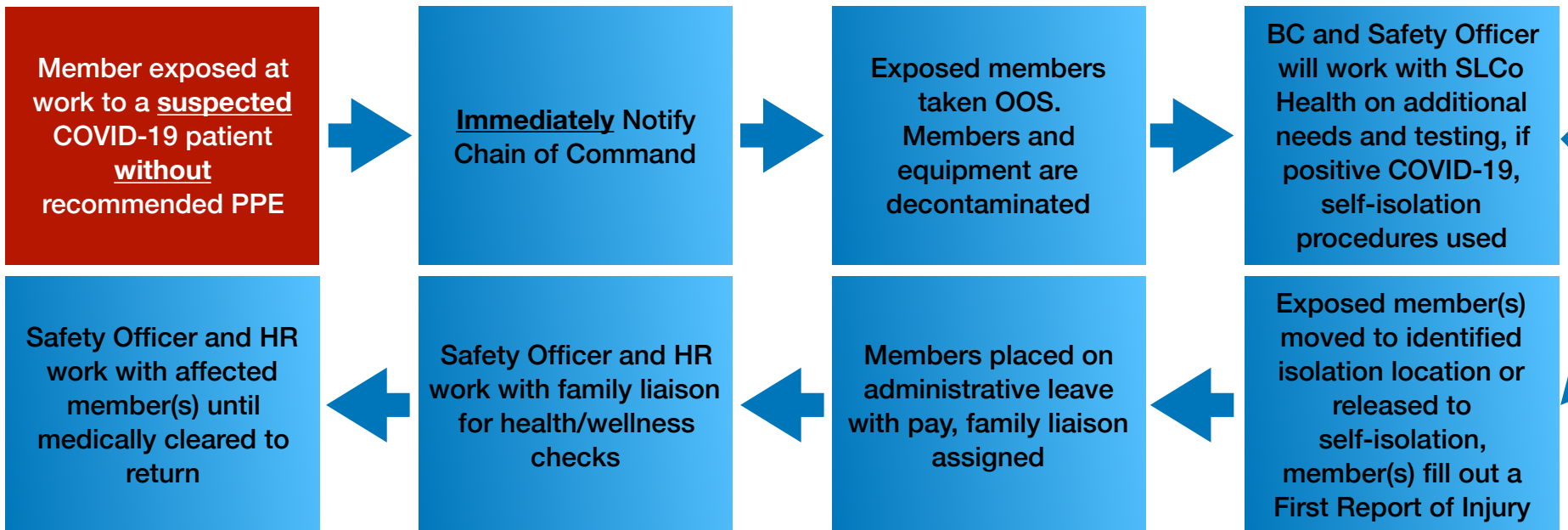
SCENARIO #1



SCENARIO #2



SCENARIO #3

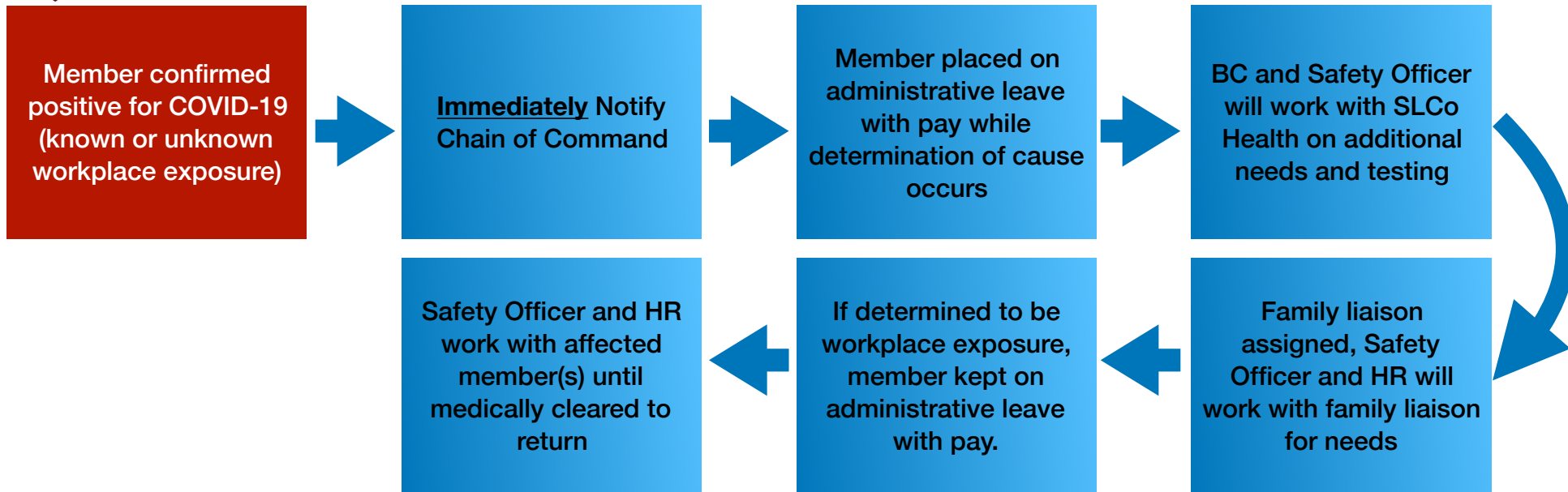


S/S of COVID-19 are a fever  $\geq 100.0$  F or subjective fever. Respiratory s/s are cough, shortness of breath, and sore throat. Medical evaluation may be recommended for lower temperatures ( $< 100.0$  F) or other symptoms (e.g., muscle aches, nausea, vomiting, diarrhea, abdominal pain headache, runny nose, fatigue) based on assessment by public health authorities.



Unified Fire Authority  
COVID-19 Exposure Flow Chart

SCENARIO #4



OTHER SCENARIOS

Family/household member demonstrating symptoms after a known exposure who has **NOT** been confirmed positive for COVID-19  
OR  
Family/household member who has been confirmed positive for COVID-19

Member contacts the Utah Department of Health Hotline for COVID-19 to report  
Follow direction from Utah Department of Health 1-800-456-7707

- |   |   |
|---|---|
| <p><b>IF DIRECTED TO SELF-ISOLATE</b></p> <ul style="list-style-type: none"> <li>- Notify Chain of Command immediately</li> <li>- Safety Officer and HR will provide home support and daily check-ins, family liaison will be assigned</li> <li>- Work from home or paid admin leave evaluated on case-by-case basis</li> </ul> | <p><b>IF NOT DIRECTED TO SELF-ISOLATE</b></p> <ul style="list-style-type: none"> <li>- Report to normal duties as assigned</li> <li>- Member may follow sick leave policy as needed to care for family members</li> </ul> |
|---|---|

S/S of COVID-19 are a fever  $\geq 100.0$  F or subjective fever. Respiratory s/s are cough, shortness of breath, and sore throat. Medical evaluation may be recommended for lower temperatures ( $< 100.0$  F) or other symptoms (e.g., muscle aches, nausea, vomiting, diarrhea, abdominal pain headache, runny nose, fatigue) based on assessment by public health authorities.