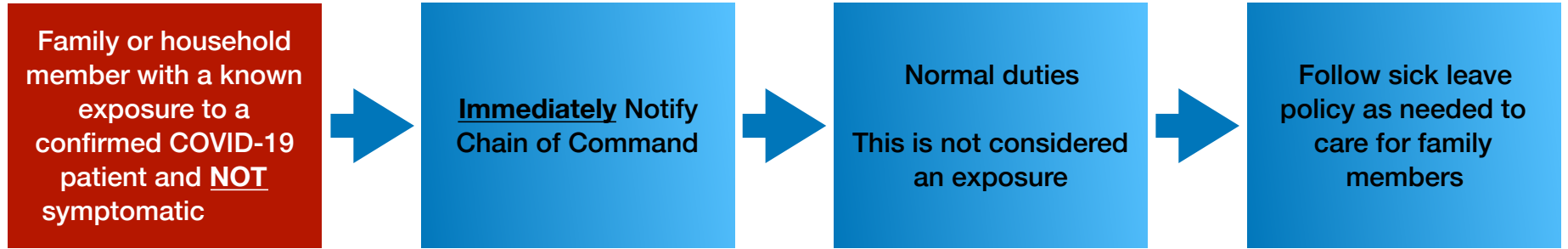


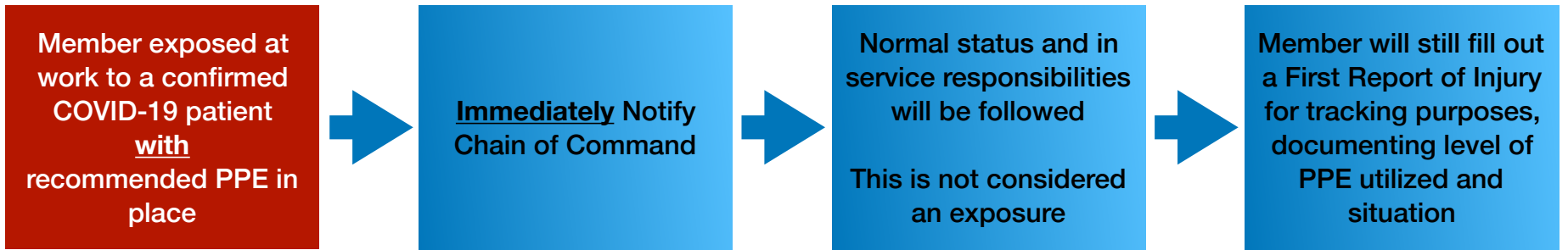


Unified Fire Authority COVID-19 Exposure Flow Chart

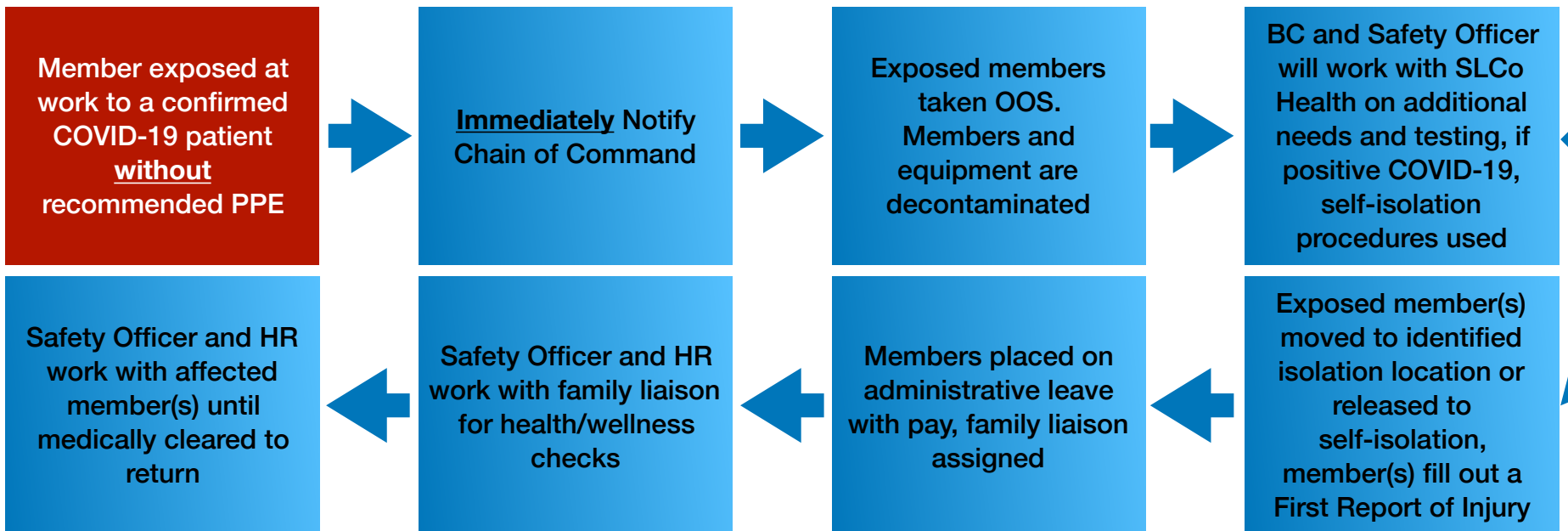
SCENARIO #1



SCENARIO #2



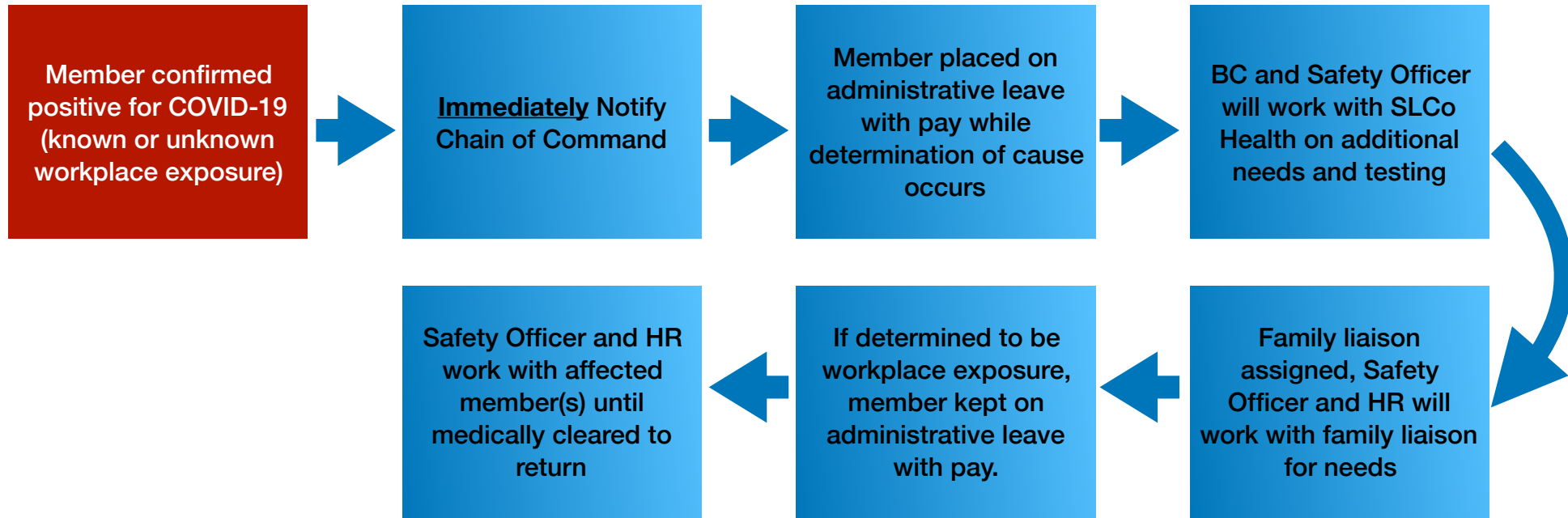
SCENARIO #3





Unified Fire Authority
COVID-19 Exposure Flow Chart

SCENARIO #4



OTHER SCENARIOS

Family/household member demonstrating symptoms after a known exposure who has NOT been confirmed positive for COVID-19
OR
Family/household member who has been confirmed positive for COVID-19

Member contacts the Utah Department of Health Hotline for COVID-19 to report
Follow direction from Utah Department of Health 1-800-456-7707

IF DIRECTED TO SELF-ISOLATE

- Notify Chain of Command immediately
- Safety Officer and HR will provide home support and daily check-ins, family liaison will be assigned
- Work from home or paid admin leave evaluated on case-by-case basis

IF NOT DIRECTED TO SELF-ISOLATE

- Report to normal duties as assigned
- Member may follow sick leave policy as needed to care for family members